

Instrument Processing

Midmark Animal Health Products



Midmark Sterilizers—because your clients trust you.

When your clients come to you, they are entrusting you with an important member of their family, their pet. Proper infection control is one way to ensure your patients' safety when your clients are depending on you to protect them. Midmark sterilizers are reliable and easy to use—count on us because they are counting on you.



The LCD display indicates cycle selected, cycle temperature and exposure time. When the cycle enters sterilization mode, the temperature, pressure and the remaining cycle time is displayed. Remaining cycle time is also displayed in dry mode.

Note: Temperature and pressure are not displayed during dry mode.



Cassette Rack (M11 only)
Available in either vertical or horizontal configuration, able to hold four 8" x 11" and four 3" x 5" cassettes.



Pouch Rack
M9 – 1 pouch rack
M11 – 2 pouch racks



Pulse-Air Removal Technology

The Midmark M9 and M11 UltraClave® Automatic Sterilizers' unique Steam-Flush Pressure-Pulse Air Removal System, a form of dynamic air removal, is so efficient that it can pass the air removal tests required on more complex vacuum steam sterilizer systems, ensuring thorough steam penetration for those challenging loads.

No More Wet Instruments

Once the sterilization cycle is complete, the door opens automatically and quietly to dissipate steam and dry your instruments. You'll have dry, sterile instruments every time.

Safety Features

If the door is not closed completely or the reservoir water level is low, the LCD display will provide the appropriate message. In either case, sterilization will not continue until you've attended to the unit.

Draining and Filling Made Easy

To make draining and filling easier, both the M9 and the M11's reservoir fill ports and drain tubes are in the front of the unit, not the top or in back.

Optional Printer Accessory

The M9 and M11 printer accessory provides a permanent record of cycle times, temperatures and pressures during a cycle.

Symbol	Pre-programmed Cycle	Sterilization Temperature		Hot Cycle Time (Fill, Heat-up & Vent)		Sterilization Time		Dry Time		Total Hot Cycle Time w/o dry		Total Hot Cycle Time w/dry	
		M9	M11	M9	M11	M9	M11	M9	M11	M9	M11	M9	M11
	Unwrapped	132° C 270° F	132° C 270° F	11 min	15 min	3 min	3 min	30 min	30 min	14 min	18 min	44 min	48 min
	Pouches	132° C 270° F	132° C 270° F	12 min	17 min	5 min	5 min	30 min	30 min	17 min	22 min	47 min	52 min
	Packs	121° C 250° F	121° C 250° F	10 min	14 min	30 min	30 min	30 min	30 min	40 min	44 min	70 min	74 min
	Handpieces (Unwrapped & Pouches)	132° C 270° F	132° C 270° F	11 min	16 min	6 min	6 min	30 min	30 min	17 min	22 min	47 min	52 min

NOTE: Cycle times are approximate and may vary depending on instrument loads. Preset drying is 30 minutes but can be programmed from 0 to 60 minutes.

Powerful cleaning, consistent results

QuickClean™ Ultrasonic Cleaners

The reliable, effective and easy-to-use solution for cleaning. Simply load your instruments and set the timer. It's that easy.

A durable plastic lid reduces noise and minimizes aerosol release, while doubling up as a handy drip collection unit for quiet and safe operation.

- Durable stainless steel construction (stainless steel basket included)
- Unprecedented 3 year warranty, with 5 year transducer bonding



Effective Workflow

Before the disinfection and sterilization processes, all instruments should be cleaned to remove organic and inorganic debris. Failing to thoroughly clean instruments will compromise disinfection and sterilization. With QuickClean, users can tailor the temperature, ultrasonic power and frequency modes for precise and accurate cleaning processing.

Powerful Technology

The QuickClean is equipped with Frequency-Leap technology. This advanced software reduces dead spots, creating a consistent cleaning action throughout the bath—producing clean instruments time after time.

Fast, Effective Clean

The QuickClean isn't just powerful—it's fast. The menu-driven control panel enables simple adjustment of cycle times (from 1 to 99 minutes).

Range of Sizes

Suits your application and output needs - eliminate bottlenecks and maximize flow through your instrument processing area.

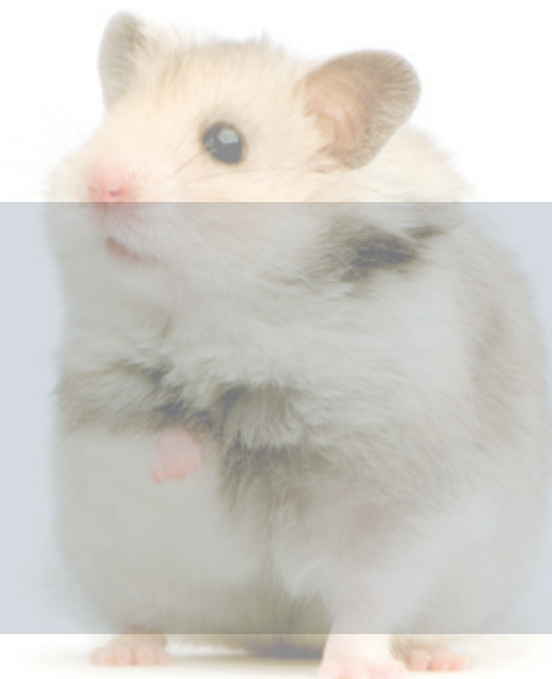


Recessed Unit allows for a low profile and easy access to the instruments.



Accessories available for the QuickClean make it a versatile and invaluable addition to any clinical space.

Like all Midmark instrument processing equipment, the QuickClean is simple to operate. It has a digital LCD control panel with user-controlled parameters to suit the needs of your practice.



The Midmark Steri-Center is Efficient Instrument Processing

What Do You Want in a Steri-Center?

Simplicity with a design that's intuitive, moving instruments in a single direction from dirty to sterile.

Durability to stand up to instrument processing demands.

Modularity and design support to create a system that fits your clinic.

Flexibility in storage design that can be reconfigured as clinic needs evolve.

Appealing look that you and your staff will be proud of.

12' Wild Cherry Woodgrain Model



Midmark's Steri-Center combined with our market leading sterilizers and quality ultrasonic cleaners creates an all-inclusive system designed to address all your critical sterilization needs.



8' Pebble Grey Model



10' Dune Woodgrain Model

**Midmark M11 UltraClave®
Automatic Sterilizer Specifications**

Overall length w/plug: 23.8"
(60.5 cm)

Overall width: 17.8" (45.2 cm)

Overall height w/printer: 17.8"
(45.2 cm)

Minimum countertop area:
17.8" W x 21.0" D
(45.2 x 53.3 cm)

Chamber:
11" diameter (28 cm)
18" depth (45.7 cm)
6.5 gal usable volume
(24.6 liters)

Trays:
Two large
9" W x 15" L x 1.1" D
(22.9 cm x 38 cm x 2.9 cm)

Two small
6.6" W x 15" L x 1.1" D
(16.8 cm x 38 cm x 2.9 cm)

Unit weight: 99 lb (44.9 kg)

Shipping weight: 131 lb
(59.4 kg)
Water reservoir capacity: 1.4 gal
(5.3 liters)

Electrical
115 VAC, 50/60 Hz, 15 Amps
Single Phase

115 VAC has 1425 watt tubular
immersion heater

230 VAC, 50/60 Hz, 10 Amps
Single Phase

230 VAC has 1500 watt tubular
immersion heater

Safety Standards
UL61010-1, 2nd Edition
IEC 61010-2-040, 1st Edition

CAN/CSA C22.2 #61010-1,
2nd Edition

CSA C22.2 #61010-2-040-07
Part 2-040 1st Edition

Meets the requirements of
ASME Boiler and Pressure
Vessel Code.

Canadian Registration Number
(CRN) available.

A separate (dedicated) circuit is
recommended for this sterilizer.

**Midmark M9 UltraClave®
Automatic Sterilizer Specifications**

Overall length w/plug: 20.38"
(51.8 cm)

Overall width: 15.3" (38.9 cm)

Overall height w/printer: 15.8"
(40.1 cm)

Minimum countertop area:
15.3" W x 17.88" D
(38.9 x 45.4 cm)

Chamber:
9" diameter (22.9 cm)
15" depth (38.1 cm)
3.5 gal usable volume
(13.4 liters)

Trays:
Two large
7.3" W x 12" L x .8" D
(18.6 cm x 30.5 cm x 2.2 cm)

Two small
5.6" W x 12" L x .8" D
(14.3 cm x 30.5 cm x 2.2 cm)

Unit weight: 73 lb (33.1 kg)

Shipping weight: 81 lb
(36.7 kg)
Water reservoir capacity: 1.1 gal
(4.1 liters)

Electrical
115 VAC, 50/60 Hz, 15 Amps
Single Phase

115 VAC has 1425 watt tubular
immersion heater

230 VAC, 50/60 Hz, 10 Amps
Single Phase

230 VAC has 1500 watt tubular
immersion heater

Safety Standards
UL61010-1, 2nd Edition
IEC 61010-2-040, 1st Edition

CAN/CSA C22.2 #61010-1,
2nd Edition

CSA C22.2 #61010-2-040-07
Part 2-040 1st Edition

Meets the requirements of
ASME Boiler and Pressure
Vessel Code.

Canadian Registration Number
(CRN) available.

A separate (dedicated) circuit is
recommended for this sterilizer.

**QuickClean Ultrasonic Cleaner
Specifications**

TableTop Unit (QC1-01):

Capacity: 1.2 Gal/4.5 L

Overall Length: 13.5" (34.5 cm)

Overall Width: 10.2" (26 cm)

Overall Height: 10.4" (26.5 cm)

Tank Size: 11.8" L x 5.9" W x
5.9" H (30 x 15 x 15 cm)

Recessed unit cut out size: N/A

Tabletop Unit Weight: 12.7 lbs
(5.76 kg)

Tabletop Shipping Weight: 14.6
lbs (6.64 kg)

Recessed Unit Weight: N/A

Recessed Unit Shipping Weight:
N/A

Electrical Requirments: Input:
115VAC +/- 10%, 60 Hz, 110W,
1.0A Output: 100W

TableTop Unit (QC3-01):

Recessed Unit (QC3R-01/QC1-01):
Capacity: 3.3 Gal/12.5 L

Overall Length: 14.7" (37.5 cm)

Overall Width: 16.5" (42 cm)

Overall Height: 10.4" (26.5 cm)

Tank Size: 13" L x 11.8" W x
5.9" H (33 x 30 x 15 cm)

Recessed unit cut out size:
15.55" x 14.37" (39.5 x 36.5
cm)

Tabletop Unit Weight: 18.6 lbs
(8.42 kg)

Tabletop Shipping Weight: 20.9
lbs (9.50 kg)

Recessed Unit Weight: 22.3" lbs
(10.10 kg)

Recessed Unit Shipping Weight:
24.6 lbs (11.18 kg)

Electrical Requirments: Input:
115V +/- 10%, 60 Hz, 210W,
1.8A Output: 200W

TableTop Unit: QC6-01
Recessed Unit: QC6R-01
Capacity: 6.6 Gal/25 L

Overall Length: 21.6" (55 cm)

Overall Width: 16.5" (42 cm)

Overall Height: 14.3" (36.5 cm)

Tank Size: 19.9" L x 11.8" W x
7.8" H (33 x 30 x 15 cm)

Recessed unit cut out size:
22.48" x 14.37" (57.1 x 36.5
cm)

Tabletop Unit Weight: 29.6 lbs
(13.44 kg)

Tabletop Shipping Weight: 32.6
lbs (14.78 kg)

Recessed Unit Weight: 32.9 lbs
(14.92 kg)

Recessed Unit Shipping Weight:
35.8 lbs (16.62 kg)

Electrical Requirments: Input:
115VAC +/- 10%, 60 Hz, 410W,
3.6A Output: 400W

All QuickClean Ultrasonics
Temperature up to: 140°F /
60°C

Stainless Steel Safety Basket:
Included

Operating Frequency: 32-38
kHz

Standards: UL 61010-1:2012;
CAN/CSA C22.2
No. 61010-1:2012;
EN 60601-1-2:2007;
EN 61326:2013;
FCC CFR 47 Part 15 part B

Limited Warranty: 3 Years

Better Patient Care. Better Business.™



midmarkanimalhealth.com

Midmark Corporation, Dayton, OH.

© 2009 Midmark Corporation • Products subject to improvement changes without notice • Litho in U.S.A. • 007-0777-00 Rev. H1 (10/17)
Midmark is an ISO 13485 and ISO 9001 Certified Company. CARB 93120.2 Phase 2 Compliant



Because we care.