

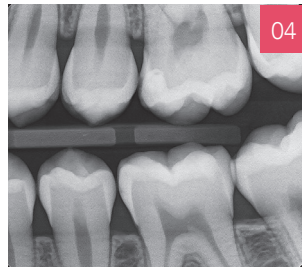
The Midmark Intraoral Digital Sensor System is designed to simplify practice integration and deliver high-quality images in a durable, patient-friendly design. Featuring a direct USB 2.0 connection, the system's advanced CMOS technology optimizes resolution while reducing noise to produce sharp, detailed images for immediate review and diagnosis.



FEATURES



01 Patient Comfort - The Midmark Intraoral Digital Sensor's thin profile, rounded corners, and contoured surfaces are designed to minimize patient discomfort. Available in two sizes to accommodate patient needs and exam requirements.



02 Better Practice Integration - The Midmark sensor integrates with our Preva 2.0 and Preva Plus Intraoral X-Rays through a direct USB hub.

03 Quality and Dependability - The sensor housing and cable are designed for reliability and a water-tight connection to promote asepsis. For added durability, Kevlar® strands are integrated to reinforce the cabling for a thin, flexible cable you can rely on.



04 Image Clarity - Advanced CMOS technology optimizes resolution while reducing noise, producing sharp, detailed images for immediate review and diagnosis.

05 Imaging Software Comes Standard - Midmark® Imaging Software supports image acquisition, diagnosis and image handling. Magnification, contrast or density adjustment, measurement assistance, and annotations are just a few of the powerful tools provided. Images can be exported, emailed or printed for insurers, your patients or referrals.

06 Peace of Mind - All Midmark intraoral sensors come with a standard five-year manufacturer's limited warranty covering failure or malfunction due to normal uses and our exclusive Sensor Safe® extended care and priority replacement plan for five years. Contact Midmark Customer Experience for the Sensor Safe extended-care plan details.

MIDMARK® INTRAORAL DIGITAL SENSOR SYSTEM SPECIFICATIONS

Film Size Equivalent	Size 1 Size 2
Active Area	30 mm x 20 mm (Size 1) 36 mm x 26 mm (Size 2)
Number of Pixels	2,104 lines x 1,404 pixels (Size 1) 2,574 lines x 1,852 pixels (Size 2)
Pixel Size	14 µm x 14 µm
Theoretical Resolution	35.7 lp/mm
Levels of Grey	4,096
Dynamic Range	72 dB
Signal-to-Noise Ratio	89 dB
Sensor Cable Length	3.61 ft (1.1 m) or 9.84 ft (3 m)
Connection Type	USB 2.0, High Speed
Power Supply	+5 V, per USB 2.0 specification
Level of Protection	IP67 (sensor only, per IEC 60529)
Options	Laptop Suite Sensor Safe Extended Care Plan
Laptop Suite Specifications	Operating System: Microsoft® Windows® 10 Professional, 64-bit Microsoft® Windows® 10 Professional, 64-bit Processor: Intel Core i5/i7 performing at a minimum of 2 GHz Intel Core i5/i7 performing at a minimum of 2 GHz Memory: Minimum 3 GB, DDR/DDR2/DDR3 Graphics Controller: Capable of minimum 1,024x768 resolution Monitor: LED Backlit display, size 13 in to 15.8 in LED Backlit display, size 13 in to 15.8 in Ports: At least two USB ports Type-A at least two USB ports Type-A Communication: 1 x Ethernet 10/100 and 1 x Wi-Fi 802.11 g/n Weight: Maximum 10 lb
Midmark Imaging Software System Requirements	Please visit midmark.com or contact Midmark Imaging Technical Support at 800.643.6275
Integrated Imaging Management Systems	Midmark Intraoral Digital Sensors are fully integrated with many imaging management systems. Software and system requirements are subject to change over time, please work with Midmark Imaging Technical Support at 800.643.6275 to ensure proper integration.



MIDMARK INTRAORAL DIGITAL SENSOR LAPTOP SUITE

A seamless method for converting a practice to digital radiography, the Midmark Intraoral Digital Sensor Laptop Suite includes the Midmark Intraoral Digital Sensor System along with a laptop preconfigured for your Midmark Intraoral Digital Sensor. The laptop is preloaded with Midmark Imaging Software, Midmark Device Suite including a TWAIN client and the paired Midmark Intraoral Digital sensor calibration files.

- XSDS-05/L** Midmark IO DR Sensor, Size 1, 9.84-Foot Cable, with Laptop
- XSDS-06/L** Midmark IO DR Sensor, Size 2, 9.84-Foot Cable, with Laptop
- XSDS-0D/L** Midmark IO DR Sensor, Size 1 and 2, 9.84-Foot Cable, with Laptop

ORDERING GUIDE

MIDMARK INTRAORAL DIGITAL SENSOR SYSTEMS

- XSDN-05** Midmark IO DR Sensor, Size 1, 3.61-Foot Cable
- XSDS-05** Midmark IO DR Sensor, Size 1, 9.84-Foot Cable
- XSDN-06** Midmark IO DR Sensor, Size 2, 3.61-Foot Cable
- XSDS-06** Midmark IO DR Sensor, Size 2, 9.84-Foot Cable
- XSDS-0D** Midmark IO DR Sensor, Size 1 and 2, 9.84-Foot Cable



Midmark Intraoral Digital Sensors (sizes 1 and 2)

System Includes: Midmark Intraoral Digital Sensor with either a 3.61-foot (1.1 m) or 9.84-foot (3 m) cable, USB drive with Midmark Imaging Software, sensor calibration file and documentation kit with user manual, sample sheath pack and sensor positioning kit.

MIDMARK INTRAORAL DIGITAL SENSOR ACCESSORIES

- 500-432** Sensor Sheaths for Size 1 Sensor (500/box)
- 500-433** Sensor Sheaths for Size 2 Sensor (500/box)
- 45-A2019** Sensor Holder (Grey), Desktop
- 45-A2019-W** Sensor Holder (White), Desktop
- 45-A2018** Sensor Holder (Grey), Arm
- 45-A2019-W** Sensor Holder (White), Arm

Kevlar is a registered trademark owned by E. I. du Pont de Nemours and Company. Microsoft and Windows are registered trademarks owned by Microsoft Corp.

For more information, contact your Midmark dealer or call 1.800.MIDMARK. Outside the USA, call 1.937.526.3662 or visit our website at midmark.com

© 2024 Midmark Corporation, Versailles, Ohio USA. Products subject to improvement changes without notice. Litho in USA.

007-10042-00 Rev D1 (5/24)

