

Designing for Accessibility

ADA-Height Stainless Steel Treatment Table



Animal care solutions that align with the Americans with Disabilities Act (ADA) help ensure veterinary teams can deliver the best possible care.

The Midmark ADA-Height Treatment Table features an overhang design to provide proper knee space for wheelchair access. In addition to height accessibility, the stainless steel design is available with left- and right-hand door and drawer combinations.

- 33.5" height meets ADA requirements.
- 24" wide table top adheres to ADA side-reach specification.
- 5" deep tub with a 16.5" overhang provides convenient forward-reach workspace for procedures.
- Grates constructed from 18-gauge, 304 stainless steel increase durability.
- Seamless, removable polystyrene drawers enhance cleanability.
- Soft-close hinges and adjustable ball-bearing slides create a quieter environment.
- Medical-grade cabinet handles withstand rigors of clinical environments.



01



02

01 Seamless, Removable Polystyrene Drawers
Rounded corners and one-piece construction help contain spills and can be easily cleaned.

02 Cover Glides
The aseptic, sealed drawer glide design helps simplify cleaning, disinfection and maintenance.

ADA-HEIGHT TABLE SPECIFICATIONS

Part Number	Description
109-7478-11	60" L, ADA-Height 5"D Stainless Steel Wet/Prep Cabinet With Overhang, 3 Drawers, 1 Door, Right Hand
109-7478-12	60" L, ADA-Height 5"D Stainless Steel Wet/Prep Cabinet With Overhang, 3 Drawers, 1 Door, Left Hand
109-7478-13	60" L, ADA-Height 5"D Stainless Steel Wet/Prep Cabinet With Overhang, 3 Drawers, 1 Door, Right Hand, Plumbing Cut-Out
109-7478-14	60" L, ADA-Height 5"D Stainless Steel Wet/Prep Cabinet With Overhang, 3 Drawers, 1 Door, Left Hand, Plumbing Cut-Out

	Description
Length	60"
Width	24"
Height	33.5"
Configurations	Left-Hand and Right-Hand options with 3 Drawers and 1 Door – Available with and without plumbing cut-outs. – Strainer assembly included. – Faucet sold separately.



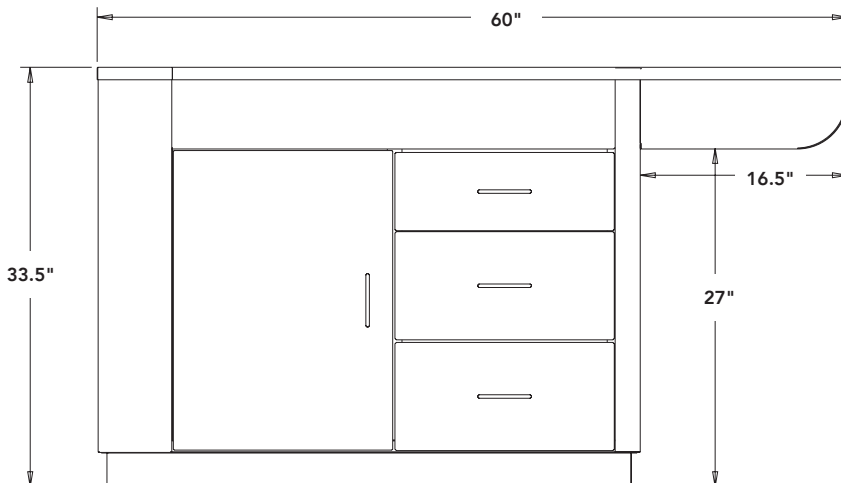
Accessible Workspace

With a 16.5" table overhang, caregivers can access table from all three sides.



Side Reach Accessibility

The 24" wide ADA-Height table provides compliance with side reach accessibility for patient care.



Part Number: 109-7478-12 – Left Hand Configuration

Note: 33.5" height meets ADA requirements and the 60" length provides ample workspace.

SOURCES:

1 www.ada-compliance.com/space-allowance-reach-ranges

© 2024 Midmark Corporation, Versailles, Ohio USA. All rights reserved.
007-10501-00 Rev B1 (9/24)