

SPECIFICATIONS

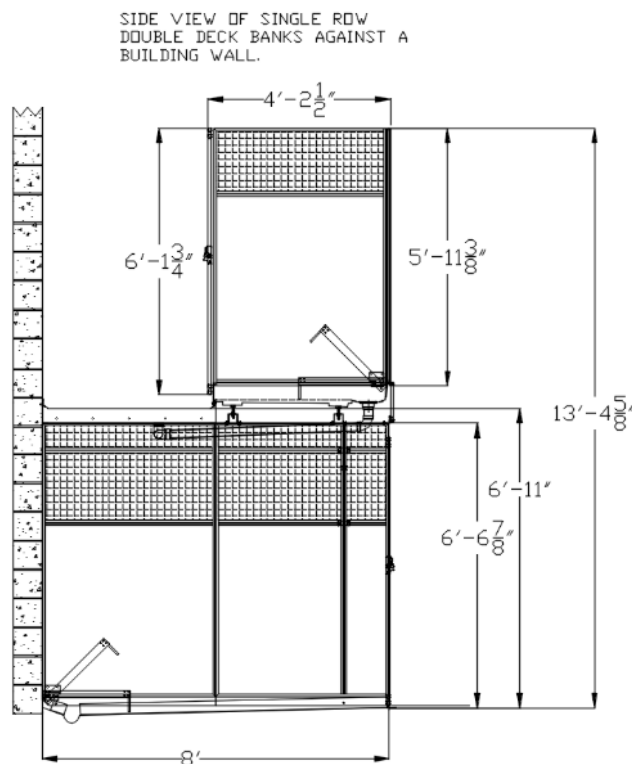
SINGLE ROW DOUBLE DECK



Options:

- Runs available in 36" or 48" widths
- Upper run depths are 48" smaller than the lower runs
- Gates are available in any standard Sani-Kennel configuration
- Optional Swing-Up Rest Benches and Gate mounted Dog Bowl Inserts
- Midmark does not supply plumbing from drain connection to facility sewer
- Midmark does not provide stairs or landing

MINIMUM CEILING HEIGHT OF 14' IS REQUIRED



STAIRS AND LANDING PROVIDED BY OTHERS

NOTE:
All dimensions
are $\pm 1/8"$

SPECIFICATIONS

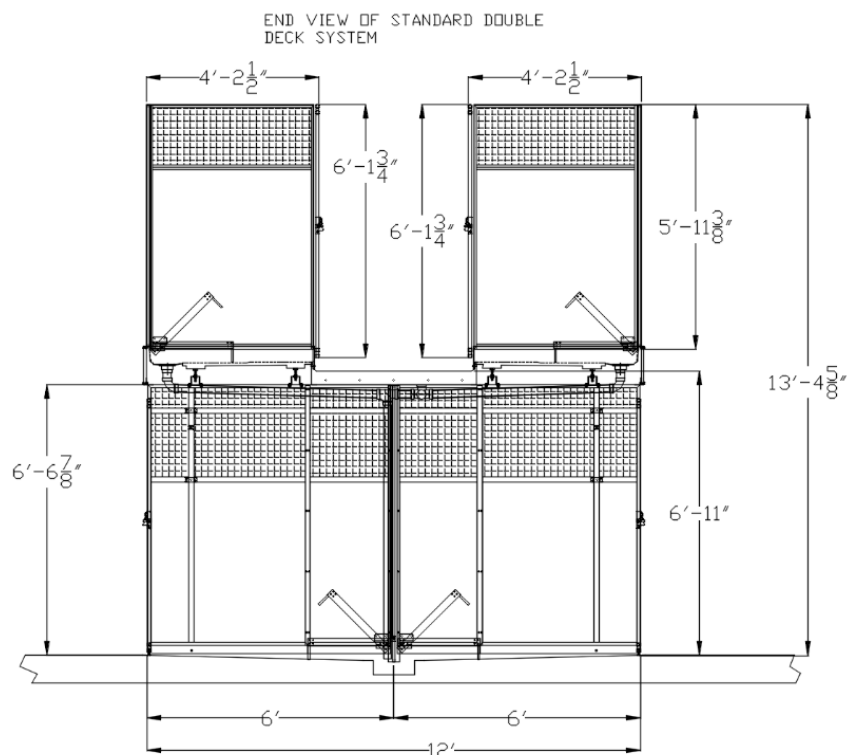
BACK-TO-BACK DOUBLE DECK



Options:

- Runs available in 36" or 48" widths
- Upper run depths are 24" smaller than the lower runs
- Gates are available in any standard Sani-Kennel configuration
- Optional Swing-Up Rest Benches and Gate mounted Dog Bowl Inserts
- Midmark does not supply plumbing from drain connection to facility sewer
- Midmark does not provide stairs or landing

MINIMUM CEILING HEIGHT OF 14' IS REQUIRED



STAIRS AND LANDING PROVIDED BY OTHERS

NOTE:

All dimensions
are $\pm 1/8"$