

Installation Instructions for Aluminum Framed FRP Restbenches - Wall Mount

Note: Wall mounting hardware is shown only for reference purposes and is not included

1. Measure out from the back wall of the run a distance of 1'-8 3/8" and make a mark on the division panel (or side wall). Then measure up vertically a height of 3 5/16" plus the height of the rest bench (example: If you have a 6" high rest bench you would measure up 9 5/16"). Make a mark on the panel (wall). Using a level, transfer the last mark you made to the back wall of the run. Do this on both sides of the run. See Figure 1.

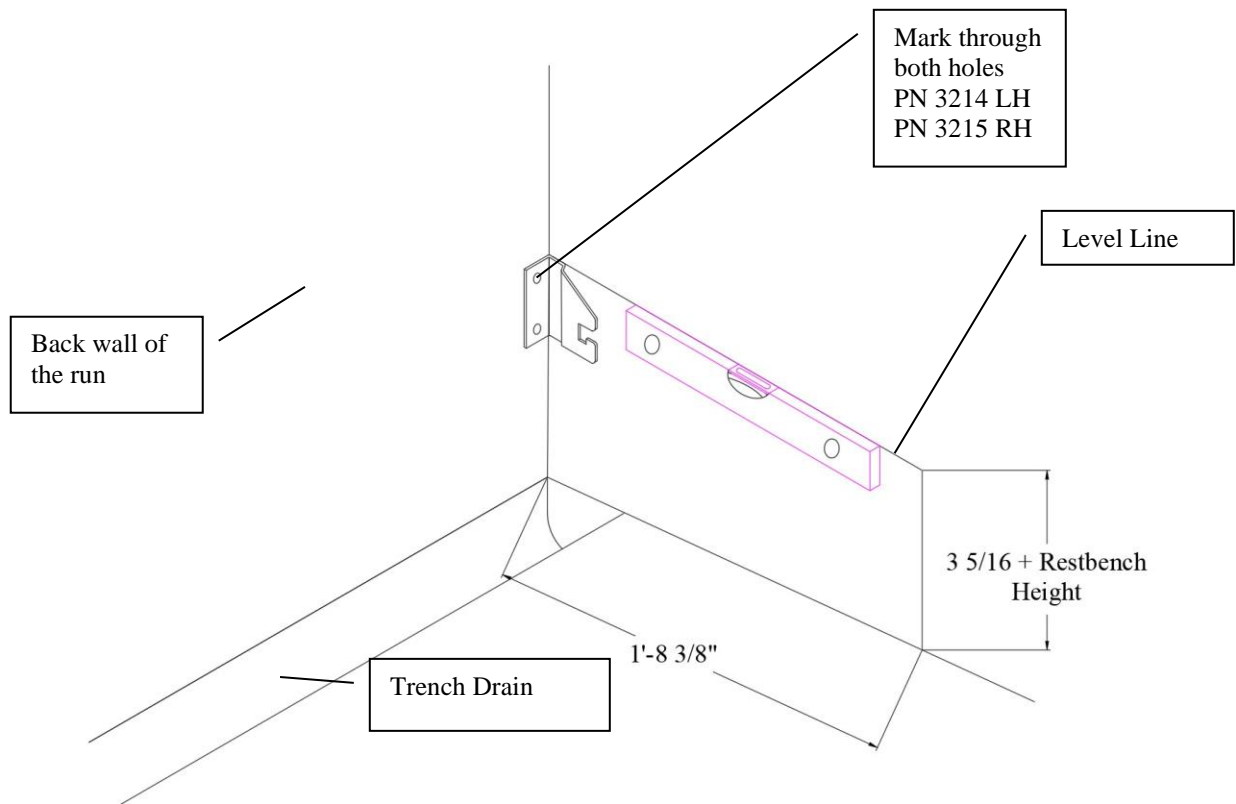


Figure 1.

2. Hold a support bracket against the back and sidewalls of the run so that the top of the bracket is even with the mark. Mark the wall for drilling through both holes in the bracket. See Figure 1.
3. Using a 3/8" masonry bit drill (2) 3/8" holes in the wall to a depth of 1 1/2".
4. Repeat steps 2 and 3 on the opposite side of the run.
5. Insert a 1/4"-20 x 1 1/4" bolt (supplied) through the mounting holes in the support brackets. Install an anchor plug on each bolt. The end of the anchor should be approximately even with the end of the anchor. Be sure that the anchor plugs are installed in the correct orientation. See Figure 2.

Correct

Not Correct

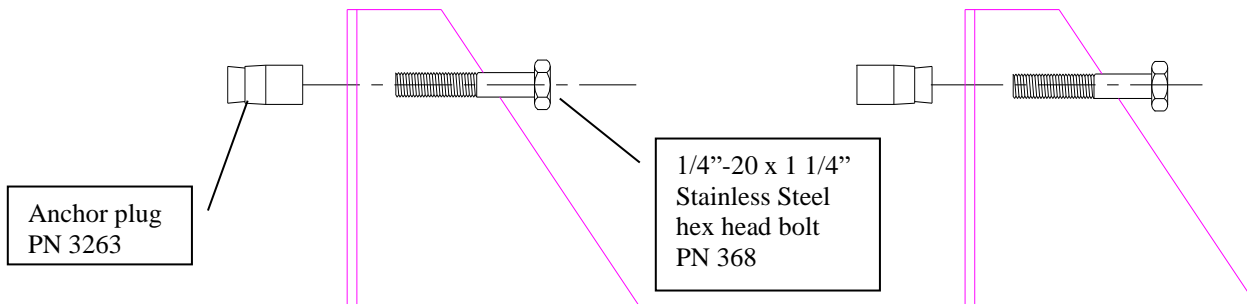


Figure 2.

6. Attach the grid front support to the angle on the bottom of the rest bench using the supplied hardware. Be sure to place the grid so that the long side with a full length web is at the top to prevent the grid from slipping off of the bolts. See Figure 3.

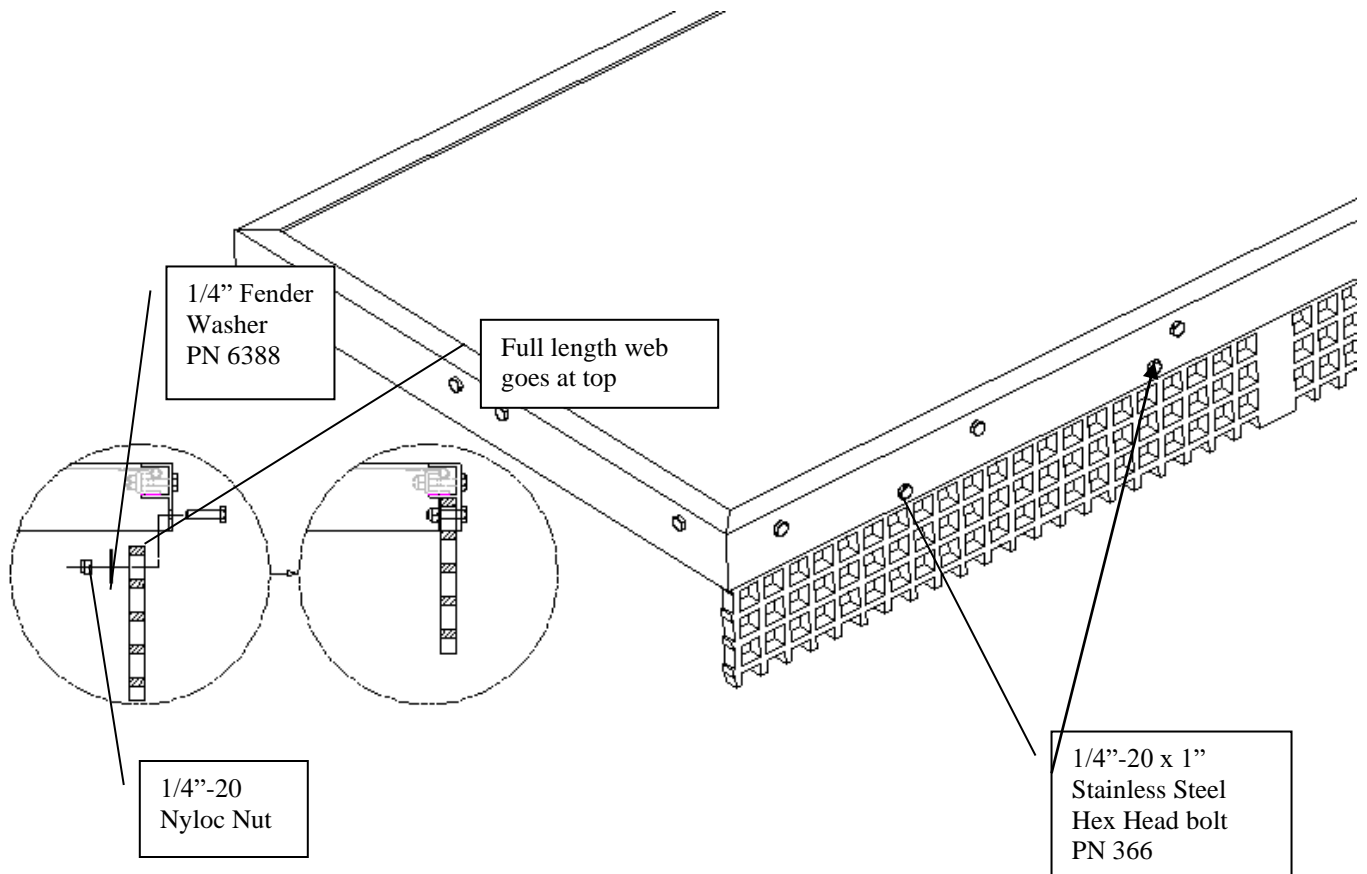


Figure 3.

7. Insert (2) 1/2"-13 x 1 3/4" bolts supplied into the threaded plugs as shown in Figure 4.

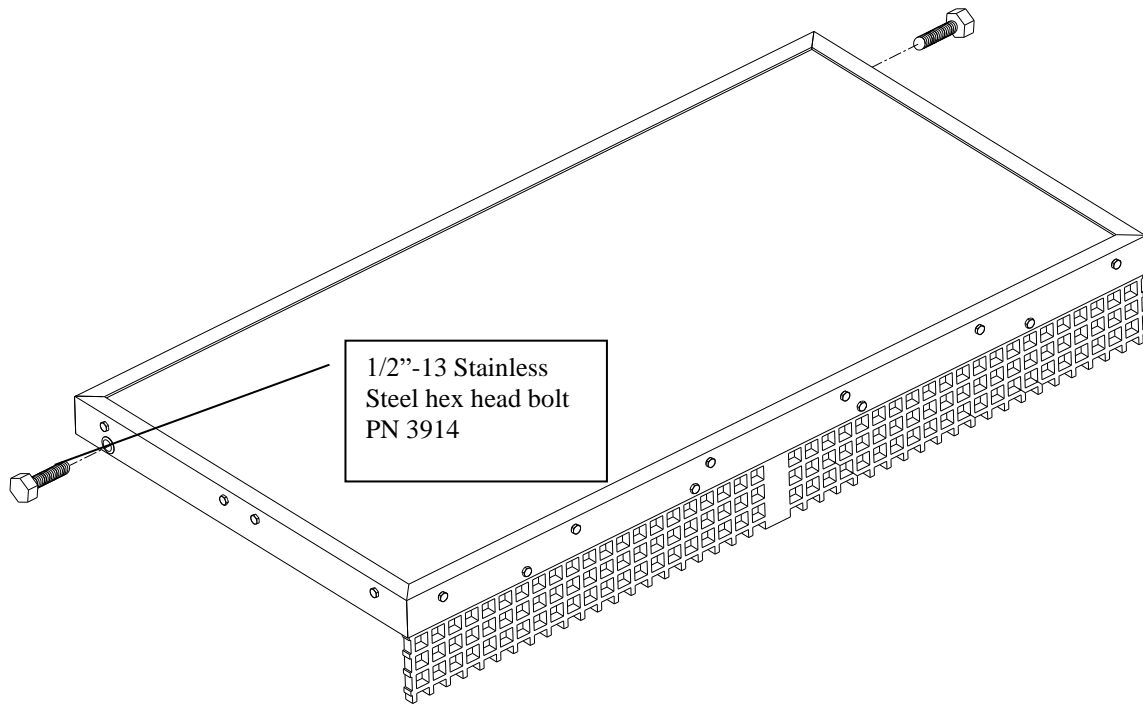


Figure 4.

8. Leave the bolts extending out of the plug approximately 9/16" as shown. Do not tighten them with a wrench, hand tighten only! See Figure 5.

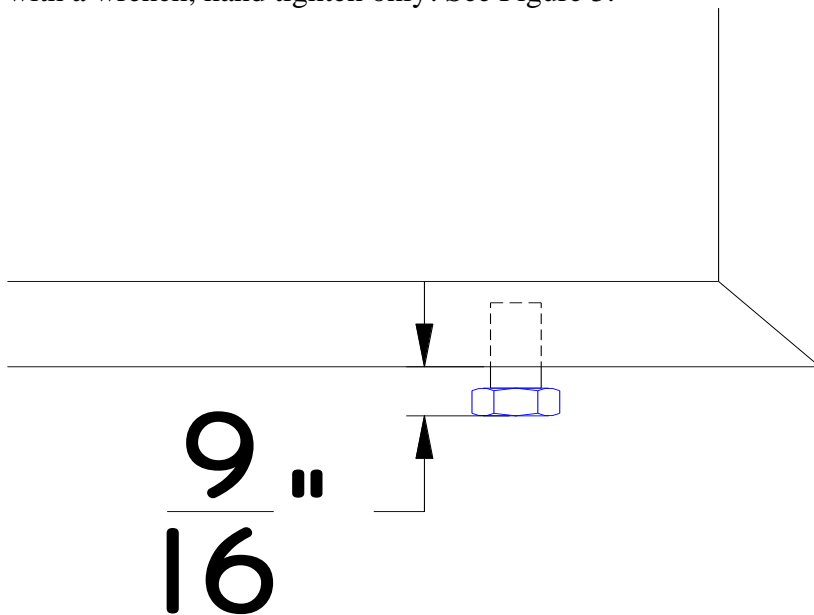


Figure 5.

- Place the rest bench into positions by situating the bolts into the slot in the front of the restbench brackets and pushing toward the back of the slot until you feel the bolts drop into the bottom of the slot as shown in Figure 6.

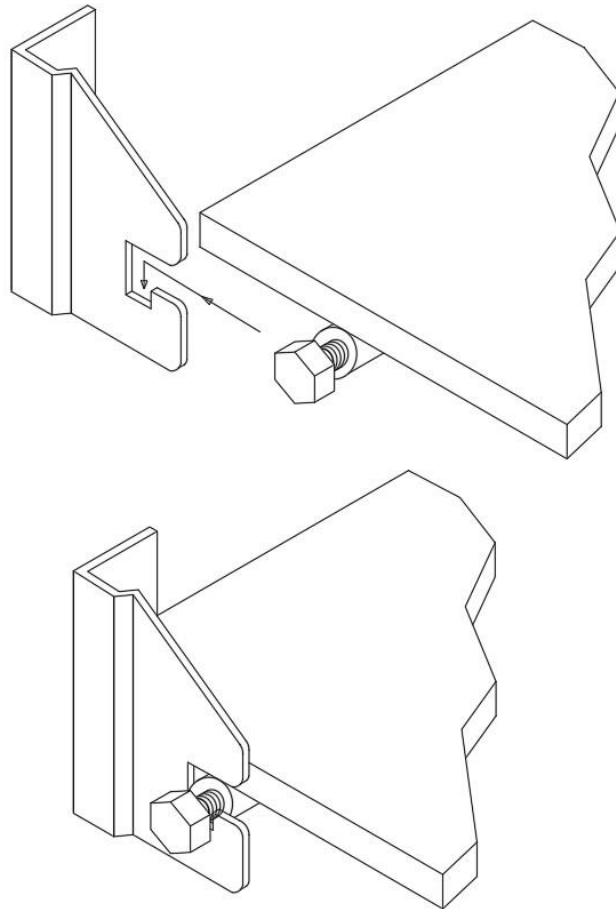


Figure 6.